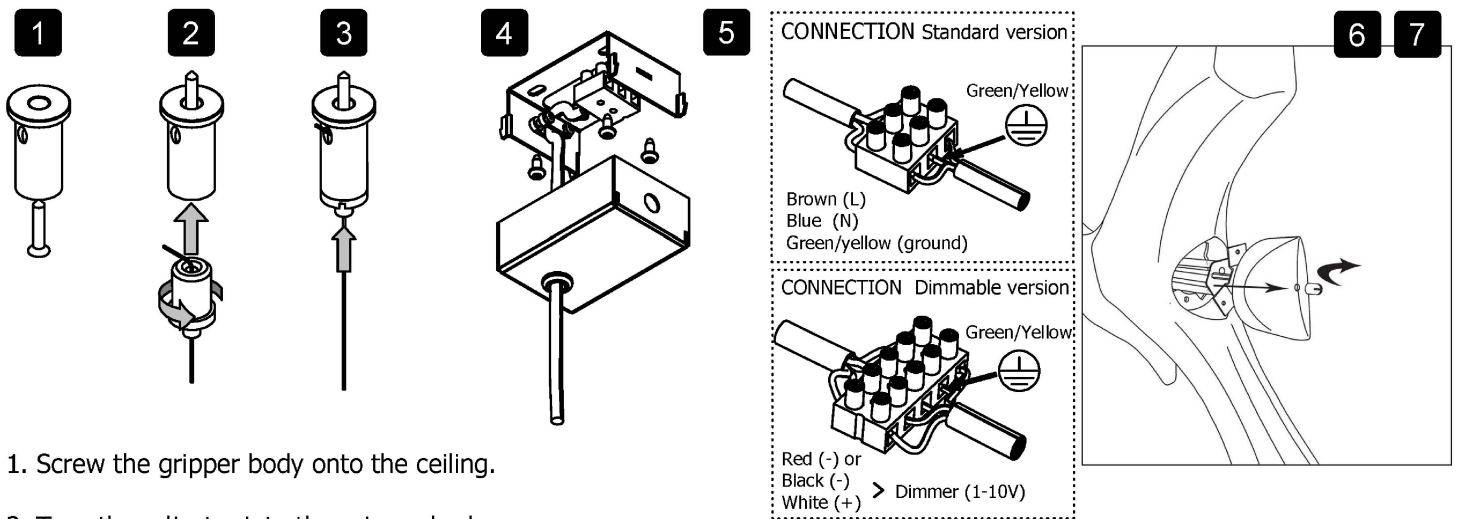
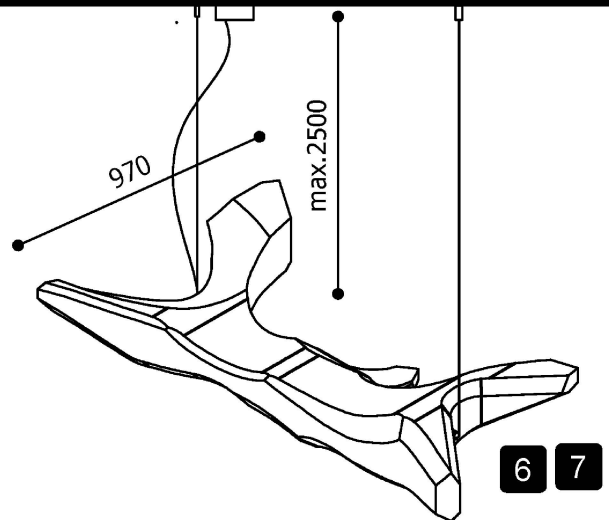
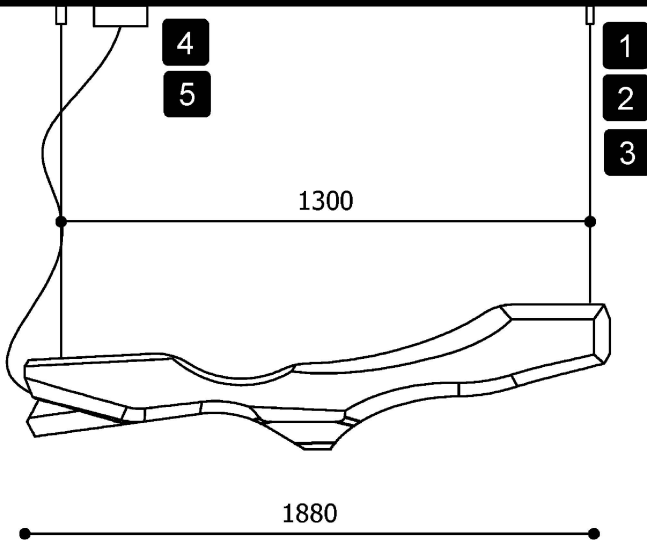


# Assembly doctor for OBLIVION

Design by Arne Quinze for DARK



1. Screw the gripper body onto the ceiling.
2. Turn the adjuster into the gripper body.
3. Lock the cables on the preferred height.
4. Mount the ceiling bracket with four screws onto the ceiling.
5. Connect the power supply and close the ceiling base.
6. To (re)place the lamp, pull out the lampframe.  
Twist, lock and screw on 1 side. Do the same at the other side. Place the lamps, respect the wattage.
7. Screw the round nuts on the endpieces and attach the suspensioncables to the nuts.

## Lamp possibilities :



Dark at night  
Vliegplein 43 - 9991 Maldegem  
Belgium - Europe

tel +32(0)50/71.81.40  
fax +32(0)50/71.81.38  
mail [info@dark.be](mailto:info@dark.be)

3x		21 Watt	G5	EVG	EVGD	DALI
3x		39 Watt	G5	EVG	EVGD	DALI

LED	CE			0,2m	850 °C	IP20			25 kg
-----	----	--	--	------	--------	------	--	--	-------