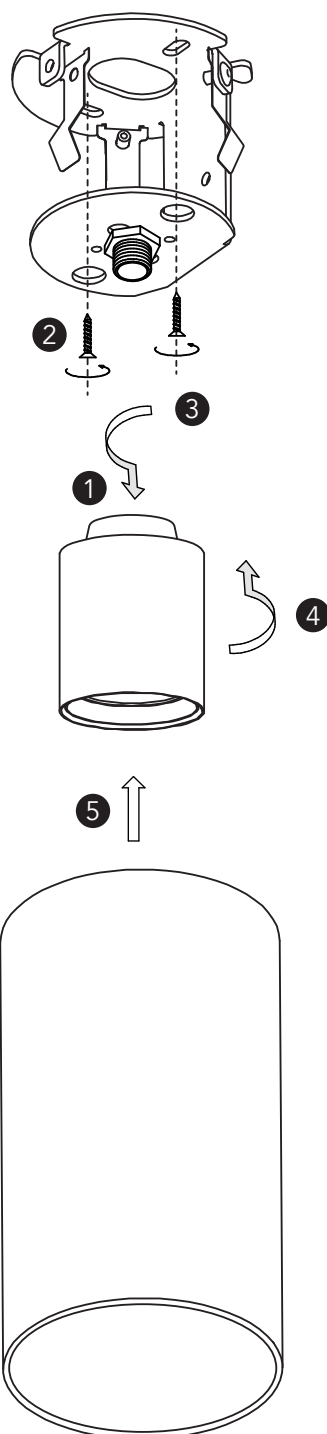


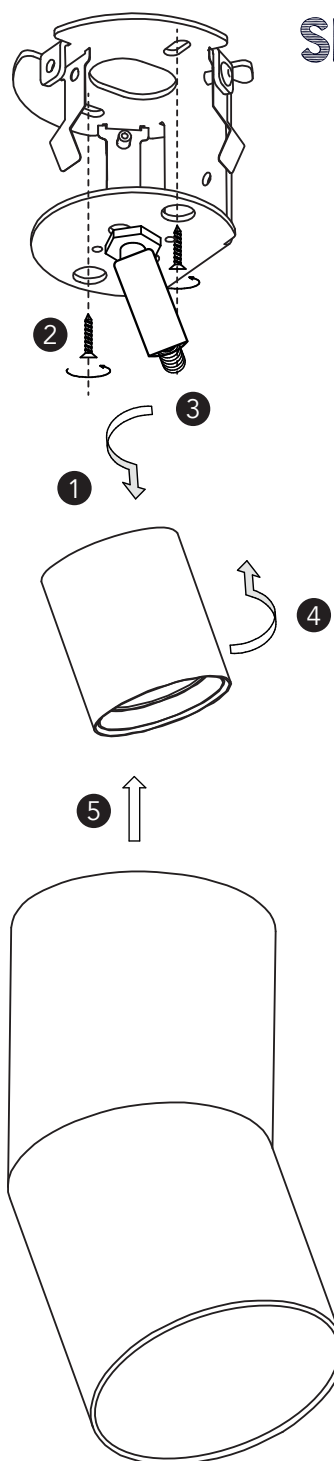
ASSEMBLY DOCTOR TERRATOI

design jelt gregoire for dark

FIX



SKIEF



- ❶ Unscrew the lamp from the bracket.
- ❷ Fasten the bracket to the ceiling using 2 screws.
- ❸ Make the electrical connection.
- ❹ Screw the lamp back onto the bracket.
- ❺ Slide the housing over the bracket (over the wings) to secure the housing.

Terracotta



DARK®

© DARK 2021 / DARK has the right to change any technical data, dimensions, colors and characteristics without prior notice. All rights reserved.
Please always check the latest technical data sheet on www.dark.be.

DARK at night nv
Vliegplein 43 / 9991 Maldegem / Belgium
+32 50 71 81 40 / info@dark.be / www.dark.be